

Vidya Bhawan Balika Vidyapeeth Lakhisarai

Arun Kumar Gupta

Class 9th

Sub. Biology

Date:- 24.11.20

Areolar

- This tissue acts as a filter in between the spaces present inside the organs of the body.
- It helps in repairing other tissues as well.
- It is found in the skin and bone marrow.

Components of the Areolar Connective Tissue

Cell types

Macrophage

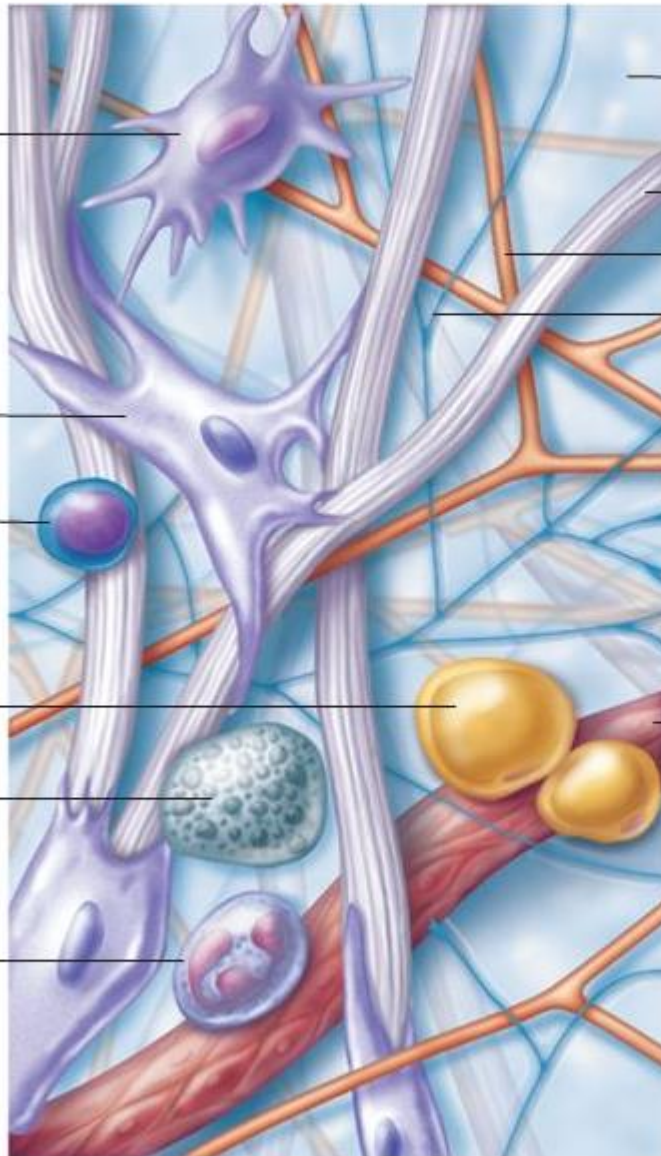
Fibroblast

Lymphocyte

Fat cell

Mast cell

Neutrophil



Extracellular matrix

Ground substance
Fibers

- Collagen fibers
- Elastic fibers
- Reticular fibers

Capillary

Figure 12 Components of the areolar connective tissue

1. Cells

- **Fat Cells (Adipocytes)** – They are responsible for secretion of lipids.
- **Fibroblasts** – They are present in the highest amount in areolar tissues. They are responsible for secretion of fibres.
- **Mast Cells** – They release histamine that plays a role in allergic reactions

- **Macrophages** – They eat any germs or infectious cells in the body
- **Plasma Cells** – They produce antibodies